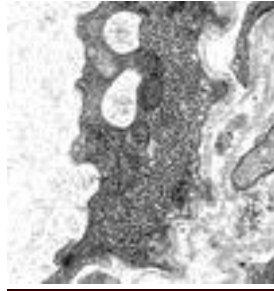


## Nephropath teaching point 9:

### Endothelial tubuloreticular inclusions



Teaching point 9 question has attracted correct response from majority of readers. Amongst the choices (Lupus nephritis, Systemic sclerosis, Alport's disease, HIV associated nephropathy and systemic interferon therapy) 73.68% agreed that endothelial tubuloreticular inclusions (TRIs) are usually not seen in Alport's disease.

TRIs are subcellular organelles characterized by small clusters of anastomosing tubule-like structures within cisternae of endoplasmic reticulum and are considered footprints of biological activity of the alpha or beta interferons (IFN- $\alpha$  and INF- $\beta$ ). These structures have been described with collagen vascular diseases (Eg, SLE, systemic sclerosis, MCTD etc.), HIV infection and HIV associated nephropathy and during systemic treatment with interferons. Other diverse conditions where TRIs have been described include inclusion body myositis, Kaposi's sarcoma, pyridoxine deficiency, gliomas, myelodysplastic syndrome, soft tissue sarcomas, and hairy cell leukemia.

Posted on 31-8-2012

©[www.nephro-pathology.com](http://www.nephro-pathology.com)